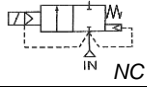


Media: air – water – light oil - vacuum
 Pressure range: 0 to 10 Bar max
 Media temperature: 120° C max
 Ambient temperature: -20°C to +60°C max
 Media viscosity: 50 centistokes max
 Mounting: coil upright
 Opening / Closing Time: 50 mSec Max



2/2 Brass Flanged

DN15 – DN50
 NORMALLY CLOSED
 2 WAY ZERO RATED
 0 – 10 Bar
 TYPE ADF15-50



PRESSURE

Ø Port PN16	Ø Orifice (mm)	Flow Kv Ltr/ min	Pressure Rating (Bar) ΔP			Max Working	Seals Temp °C	Part Number
			Min	Max AC	Max DC			
1/2	15	75	0	10	7	10	NBR	AD15PF + seal + voltage
3/4	20	155	0	10	7	10	80°C	AD20PF + seal + voltage
1	25	220	0	10	7	10	FKM	AD25PF + seal + voltage
1 1/4	35	433	0	10	7	10	120°C	AD35PF + seal + voltage
1 1/2	35	433	0	10	7	10	EPDM	AD40PF + seal + voltage
2	51	800	0	7	5	10	120°C	AD50PF + seal + voltage
							Silicone	
							130°C	

OPTIONS

IP67 (EN60529:1991+A1:2000) UL + CSA Approved Coil & IP65 LED Connector PG11 – DIN 43650 A
 ATEX 22003EX Coil: ATEX EExmIIT4 II 2G & 2D IP65 T130°C (Max ΔP 3 Bar)
 ANSI150Lb, JIS10K or other flange
 Manual Over Ride (Bottom entry mounted turn T bar)
 VST, CR, ECO, HNBR, Silicone or Hypalon Seals
 Other custom made options available upon request

ELECTRICAL DATA

Voltage (-10% + 10%) Continuous duty 100%	Coil	Power Consumption		Insulation class	Enclosure	Electrical connections
		Inrush	Holding			
~ 24 - 110 - 230 (50 or 60 Hz)	WPG2	18.7VA	15.3VA	H 180°C	IP 65 with connector	3 spades DIN 43650A DIN 40050 VDE 0110
= 12 - 24 (DC)		18 Watts				

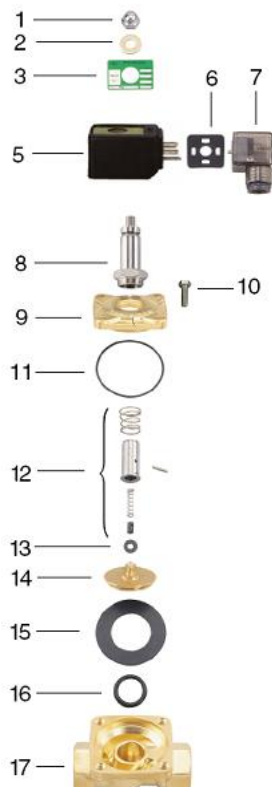
CONSTRUCTION

Body: Forged Brass
 Tube and Spring: 304 Stainless Armature: 430F Stainless other internal parts Brass
 Seals and gaskets: NBR (Optional EPDM, FKM, Silicone, VST, CR, ECO, HNBR or Hypalon)
 Moulded coil: Resin

REPAIR KIT

Coil	WPG2 + voltage
Diaphragm	SP215 + valve part number

OVERALL DIMENSIONS



No.	Part No	Description
1	SP201*	Nut
2	SP202*	Washer
3	SP203*	Nameplate
5	WPG2*	Coil
6	SP206*	Gasket
7	SP207*	Connector
8	SP208*	Core Tube
9	SP209*	Valve Bonnet
10	SP210*	Bolt
11	SP211*	Bonnet O Ring
12	SP212*	Armature Assembly
13	SP213*	Diaphragm Base Kit
14	SP214*	Diaphragm Base
15	SP215*	Diaphragm
16	SP216*	Base O Ring
17	SP217*	Valve Body

* = Valve Part Number

Model	A	B	C	D	G	H	Kg
AD15F	110			40			
AD20F	120			40			
AD25F	132	125	162	40	19	14	5.35
AD35F	160	135	174	40	19	16	7.75
AD40F	160	140	177	40	19	16	8.00
AD50F	200	155	195	40	19	16	11.0

