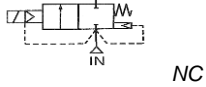


Media: air – fluid – gas – vacuum- water
 Pressure range: 0 to 10 Bar max
 Media temperature: 120°C max
 Ambient temperature: -20°C to +60°C max
 Media viscosity: 50 centistokes max
 Mounting: coil upright
 Opening / Closing Time: 50 mSec Max



2/2 Stainless Flanged

DN15 – DN50
 NORMALLY CLOSED
 2 WAY ZERO RATED
 0 – 10 Bar
 TYPE ADSF



PRESSURE

Ø Port PN16	Ø Orifice (mm)	Flow Kv Ltr/ min	Pressure Rating (Bar) ΔP			Max Working	Seals Temperature °C	Part Number
			Min	Max AC	Max DC			
DN15	15	75	0	10	7	10	NBR +80°C FKM +120°C EPDM +120°C Silicone +130°C *CST +185°C	ADS15PF + seal + voltage
DN20	20	155	0	10	7	10		ADS20PF + seal + voltage
DN25	25	220	0	10	7	10		ADS25PF + seal + voltage
DN32	35	400	0	10	7	10		ADS35PF + seal + voltage
DN40	35	400	0	10	7	10		ADS40PF + seal + voltage
DN50	51	800	0	7	5	10		ADS50PF + seal + voltage

OPTIONS

IP67 (EN60529:1991+A1:2000) UL + CSA Approved Coil & IP65 LED Connector PG11 – DIN 43650 A
 ATEX EExmIIT4 II 2G & 2D IP65 T130°C coil. ⚠️ (Max Pressure 3 Bar)
 ANSI150Lb, JIS10K or other flange
 Manual Over Ride (Bottom entry mounted turn T bar)
 Silver Shading Ring (ADSxxPFS)
 *VST special seals for steam 180°C, CR, ECO, HNBR, Silicone or Hypalon Seals
 Other custom made options available upon request

ELECTRICAL DATA

Voltage (-10% + 10%) Continuous duty 100%	Coil	Power Consumption		Insulation class	Enclosure	Electrical connections
		Inrush	Holding			
~ 24 - 110 - 230 (50 or 60 Hz)	WPG2	18.7VA	15.3VA	H 180°C	IP 65 with connector	3 spades DIN 43650A DIN 40050 VDE 0110
= 12 - 24 (DC)		18 Watts				

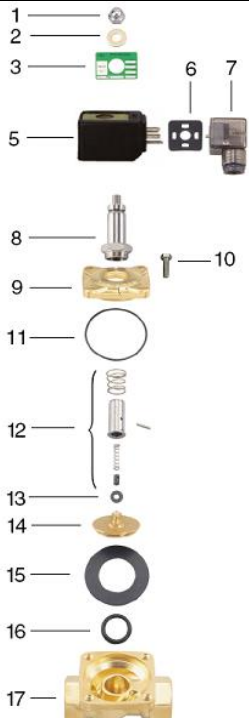
CONSTRUCTION

Body: 316 stainless steel CF8M
 Tube and Spring: 304 Stainless Armature: 430F Stainless other internal parts 316 Stainless
 Seals and gaskets: FKM (Optional EPDM, NBR, SILICONE, VST, CR, ECO, HNBR and Hypalon)
 Moulded coil: Resin

REPAIR KIT

Coil	WPG2 + voltage
Diaphragm	SP215 + Valve Part Number

OVERALL DIMENSIONS



No.	Part No	Description
1	SP201*	Nut
2	SP202*	Washer
3	SP203*	Nameplate
5	SP205*	Coil
6	SP206*	Gasket
7	SP207*	Connector
8	SP208*	Core Tube
9	SP209*	Valve Bonnet
10	SP210*	Bolt
11	SP211*	Bonnet O Ring
12	SP212*	Armature Assembly
13	SP213*	Diaphragm Base Kit
14	SP214*	Diaphragm Base
15	SP215*	Diaphragm
16	SP216*	Base O Ring
17	SP217*	Valve Body

* = Valve Part Number

Model	A	B	C	D	G	H	Kg
ADS15F	110			40			
ADS20F	120			40			
ADS25F	130	125	162	40	19	14	5.35
ADS35F	160	135	174	40	19	16	7.75
ADS40F	160	140	177	40	19	16	8.00
ADS50F	200	155	195	40	19	16	11.0

