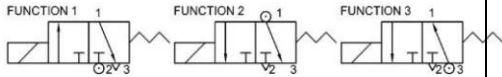


Media: air – water – gas – light oil
 Pressure range: 0 to 10 bar max
 Media temperature: +4°C +60° C max
 Ambient temperature: -10° to +50° C
 Media viscosity: 50 centistokes max
 Mounting: coil upright
 Open: 5 – 20 mSec Close: 10 – 40mSec

3/2 Nylon Pilot

22mm BASE MOUNT
 NORMALLY CLOSED
 3 WAY DIRECT ACTING
 0 – 10 Bar
 TYPE AT



PRESSURE

Ø Port	Ø Orifice (mm)		Flow Kv Ltr/ min	Pressure Rating (bar) ΔP			Seals	Part Number	
	Body	Top		Min	Max				
					Function 1	Function 2			Function 3
00	1.0	1.2	0.5	0	10	10	5	NBR	AT0012NB + voltage
								FKM	AT0012VB + voltage
	1.3	1.2	0.83	0	8	10	5	NBR	AT0022NB + voltage
								FKM	AT0022VB + voltage
	1.6	1.5	1.17	0	5	7	2	NBR	AT0032NB + voltage
								FKM	AT0032VB + voltage
2.0	1.5	1.5	0	3	7	2	NBR	AT0042NB + voltage	
							FKM	AT0042VB + voltage	

OPTIONS

IP65 Power Level 5 Coil & Connector PG9 – DIN 43650 B
 ATEX 22001EX Coil: ATEX EExmIT4 II 2G & 2D IP65 T130°C (requires stainless steel tube)
 Stainless steel tube AT00XXS2
 High Power 22003 Coil option for 10 bar working

ELECTRICAL DATA

	Voltage (-10% + 10%) Continuous duty 100%	Coil	Power Consumption		Insulation class	Enclosure	Electrical connections
			Inrush	Holding			
~	24 - 48 - 110 - 220 - 380 (50 or 60 Hz)	22001/5	11.6VA	6.9VA	F 155°C	IP 65 with connector	3 spades DIN 43650 DIN 40050 VDE 0110
=	12 - 24 - 48 - 110 (DC)		6.2 Watts				

CONSTRUCTION

Body: Polyamide
 Tube: Brass Internals: Stainless steel
 Seals and gaskets: NBR (Optional FKM)
 Moulded coil: Resin

REPAIR KIT

Coil	22001/5 + voltage
Complete plunger (Normally Closed)	KIT + valve part number

OVERALL DIMENSIONS

