

Media: Water  
 Pressure: 12 Bar max  
 Media temperature: -15°C to +80°C max  
 Media viscosity: 50 centistokes max  
 Mounting: any position

# Anti Water Hammer

Brass Nickel Plated  
 1/2 & 3/4 BSP  
 12 Bar  
**TYPE AXT**



### PRESSURE

Ø Port BSP Male	Air Chamber CM <sup>3</sup>	Dimensions			Part Number
		H	L	D	
1/2	17	105	85	45	AXT15-Brass
3/4	30	120	95	42	AXT20-Brass

### OPTIONS

Flow controller  
 Air inlet valve  
 Other custom made pressure, seal and thread options available upon request

### REPAIR KIT

Diaphragm Seal	Seal-part number
----------------	------------------

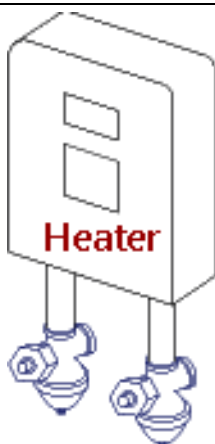
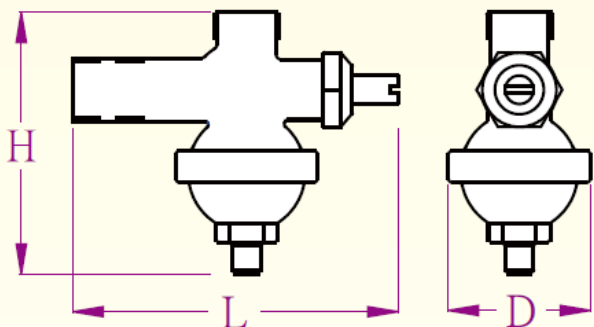
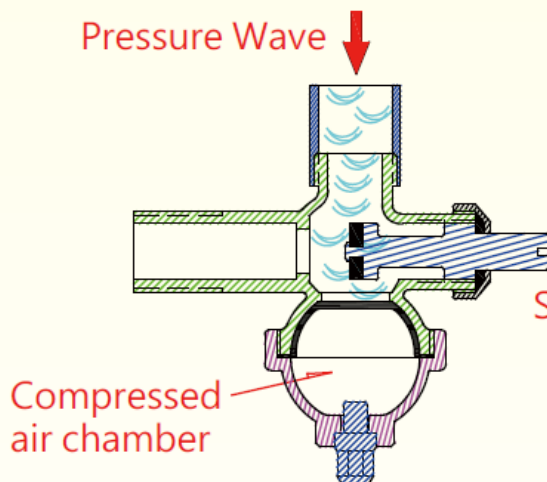
### CONSTRUCTION

Body: Brass Nickel plated  
 Seals: NBR

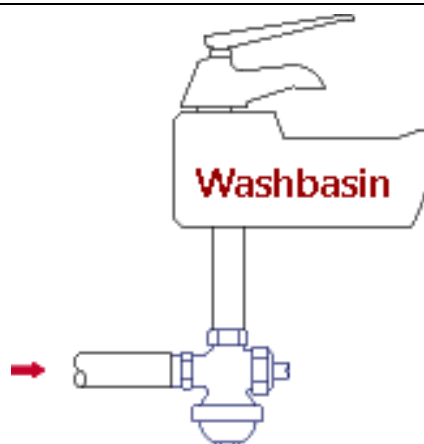
### OVERALL DIMENSIONS

#### AXT Angle Water Hammer Arrestor

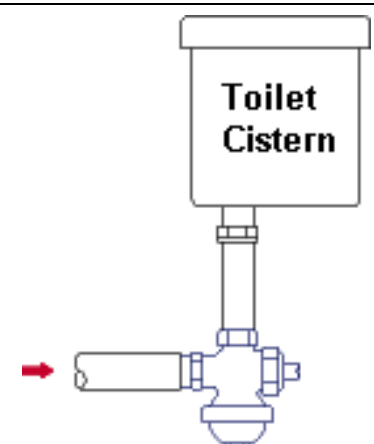
This design water hammer arrestor is for domestic. Patented and especially designed for easy installation and maintaining tranquillity for any indoor environment. Additionally the AXT patented design includes a flow controller to help reduce water flow, consumption and noise and is truly an environmentally friendly addition to any home. The air chamber pressure should be set at 1.0 Bar.



Water heaters are the most common causes of water hammer within the home as its complicated piping system can cause unstable pressure impact when turned on/off. Installing the AXT valve can reduce this. Also fitting the AXT valve to the outlet of the shower heater will reduce hammer from the shower hose. As you can see the AXT valve is ideally designed to fit easily in this application.



Fast response taps can cause water hammer effect that will echo through the pipework system. The AXT valve can reduce this when fitted to the water inlet pipe. As you can see the AXT valve is ideally designed to fit easily in this application.



When the water level in the Toilet Cistern is approaching full, the float ball valve can fluctuate hindering the flow and creates a series of backpressure waves causing water hammer. Installing the AXT water hammer arrestor at the water inlet will reduce this noise. As you can see the AXT valve is ideally designed to fit easily in this application.