

Media: water – Fluid – light oil – gas\* - air\*  
 Pressure range: 0.3 to 20 bar max  
 Media temperature: 120° C max  
 Ambient temperature: -10° to +50° C max  
 Media viscosity: 40 centistokes max  
 Mounting: Coil Upright  
 Weight (including coil): 800 g  
 Opening & Closing time: 20mSec Max



NC

# 2/2 Brass

## 1/4 – 3/4

### NORMALLY CLOSED

### 2 WAY SERVO ASSISTED

### 0.3 – 20 Bar

## TYPE CD



#### PRESSURE

Ø Port BSP	Ø Orifice (mm)	Flow Kv Ltr/min	Pressure Rating (bar) Max ΔP			Seals	Max Media Temp °C	Part Number
			Min	Max DC	Max AC			
1/4	11	40	0.3	14	20	NBR	80	CD8-NBR + voltage CD8-FKM + voltage CD8-Silicone + voltage CD8-FKM + voltage
						FKM	120	
						Silicone	120	
						EPDM	120	
3/8	12	45	0.3	14	20	NBR	80	CD10-NBR + voltage CD10-FKM + voltage CD10-Silicone + voltage CD10-FKM + voltage
						FKM	120	
						Silicone	120	
						EPDM	120	
1/2	12	45	0.3	14	20	NBR	80	CD12-NBR + voltage CD12-FKM + voltage CD12-Silicone + voltage CD12-FKM + voltage
						FKM	120	
						Silicone	120	
						EPDM	120	
3/4	16	83	0.3	14	20	NBR	80	CD16-NBR + voltage CD16-FKM + voltage CD16-Silicone + voltage CD16-FKM + voltage
						FKM	120	
						Silicone	120	
						EPDM	120	

#### OPTIONS

IP65 UL + CSA approved Coil & LED Connector PG11 – DIN 43650 A  
 NPT Thread  
 \*For Gas or air please advise (CDXX-seal + voltage+ A)  
 Stainless steel (CDS) and other custom made options available upon request

#### ELECTRICAL DATA

Voltage (-10% + 15%) Continuous duty 100%	Coil	Power Consumption		Insulation class	Enclosure	Electrical connections
		Inrush	Holding			
~ 24 - 48 - 110 - 230 – 380 (50 or 60 Hz)	WPG1	11.2 VA	8.2 VA	H 180°C	IP 65 with connector	3 spades DIN 43650A DIN 40050 VDE 0110
= 12 - 24 - 48 – 110 - 220(DC)		12 Watts				

#### CONSTRUCTION

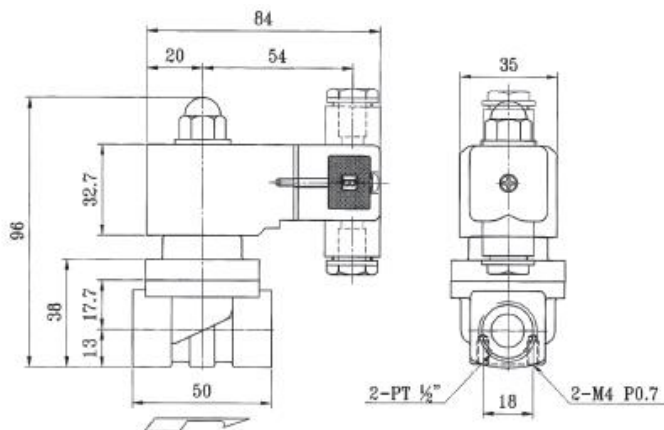
Body: Brass  
 Tube and internal parts: Stainless steel  
 Seals and gaskets: NBR (Optional FKM, Silicone or EPDM)  
 Moulded coil: Resin

#### REPAIR KIT

Coil	WPG1 + voltage
Complete plunger + O' rings	KIT + valve part number

#### OVERALL DIMENSIONS

**CD 08 – 12**



**CD16**

