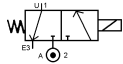


Media: air  
 Pressure range: 0 to 35 bar max  
 Media temperature: 80 °C max  
 Ambient temperature: -10 ° to +50 °C max  
 Media viscosity: -  
 Mounting: any position  
 Weight (including coil): 250 g  
 Opening or Closing time: 20mSec Max



# 3/2 Polyamide CNOMO MOUNT NORMALLY CLOSED 3 WAYS DIRECT 0 – 35 Bar TYPE H



## PRESSURE

Ø Port	Ø Orifice (mm)	Flow Kv Ltr/min	Min	Pressure (bar) ΔP			Seals	Part Number
				Air				
				Max =10 W	Max ~2.5 W	Max =3.5 W		
CNOMO Sub Base	0.8	0.6	0	35	20		NBR FKM EPDM	H1NC0.8 + seal + voltage + watt
	1.2	1.1	0	30	16			H1NC1.2 + seal + voltage + watt
	1.6	1.7	0	17	10			H1NC1.6 + seal + voltage + watt
	2.0	2.5	0	14	9			H1NC2.0 + seal + voltage + watt
	2.4	3.5	0	10	5			H1NC2.4 + seal + voltage + watt
	3.0	4.5	0	6	4			H1NC3.0 + seal + voltage + watt

## OPTIONS

IP65 Coil & Connector PG9 – DIN 43650 A  
 Manual over ride: Brass PUSH  
 Manual over ride: Brass TURN  
 Brass Body and Higher pressure options  
 Normally Open Function (H1NOXX + seal + voltage + watt)

## ELECTRICAL DATA

Voltage (-10% + 10%) Continuous duty 100%	Coil	Power Consumption		Insulation class	Enclosure	Electrical connections
		Inrush	Holding			
~ 24-48-110-240 (50 or 60 Hz)	11630	26 VA	14 VA	F 155 °C	IP 65 with connector	3 spades DIN 43650 DIN 40050 VDE 0110
= 12-24-48		10 W				
~ 24-48-110-240 (50 or 60 Hz)	11630/55	16VA	12VA			
= 6 - 12-24-48		5.5 Watts				
~ 24-48-110-240 (50 or 60 Hz)	11630/25	2.5 Watts				
= 6 - 12-24-48						

## CONSTRUCTION

Body: Aluminium with Mazak Coating  
 Tube and internal parts: stainless steel  
 Seals and gaskets: NBR (Optional FKM and EPDM)  
 Moulded coil: resin

## REPAIR KIT

Coil	Coil size (11630 or 11630/55 or 11630/25) + voltage
Armature	Sp + Valve Part Number + ARMATURE

## OVERALL DIMENSIONS

