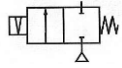


Media: air – water – light oil - vacuum
 Pressure range: 0 to 4.9 Bar max
 Media temperature: 120°C max
 Ambient temperature: -20°C to +60°C max
 Media viscosity: 50 centistokes max
 Mounting: coil upright
 Opening / Closing Time: 50 mSec Max



LATCHING

2/2 Brass

3/8 – 2"

LATCHING

2 WAY ZERO RATED

0 – 3.5 Bar

TYPE LAD



PRESSURE

Ø Port BSP	Ø Orifice (mm)	Flow Kv Ltr/ min	Pressure Rating (Bar)		Seals	Max Media Temp. °C	Part Number
			Min	Max			
3/8	15	35	0	3.5	NBR FKM EPDM	80 120 120	LAD14N + voltage LAD14V + voltage LAD14E + voltage
1/2	15	35	0	3.5	NBR FKM EPDM	80 120 120	LAD15N + voltage LAD15V + voltage LAD15E + voltage
3/4	20	72	0	3.5	NBR FKM EPDM	80 120 120	LAD20N + voltage LAD20V + voltage LAD20E + voltage
1	25	183	0	3.5	NBR FKM EPDM	80 120 120	LAD25N + voltage LAD25V + voltage LAD25E + voltage
1 1/4	35	400	0	3.5	NBR FKM EPDM	80 120 120	LAD35N + voltage LAD35V + voltage LAD35E + voltage
1 1/2	35	400	0	3.5	NBR FKM EPDM	80 120 120	LAD40N + voltage LAD40V + voltage LAD40E + voltage
2	51	580	0	2.5	NBR FKM EPDM	80 120 120	LAD50N + voltage LAD50V + voltage LAD50E + voltage

OPTIONS

IP67 UL & CSA Approved Coil & IP65 LED Connector PG11 DIN 43650A
 NPT Thread
 Manual Over Ride Base Mounted Screw T Bar for AD series
 * VST, CR, ECO, HNBR and Hypalon

ELECTRICAL DATA

Voltage (-10% + 10%) Continuous duty 100%		Coil	Power Consumption	Insulation class	Enclosure	Electrical connections
=	12 – 24 (DC)	WPG2	18 Watts	H 180°C	IP 65 with connector	3 spades DIN 43650A DIN 40050 VDE 0110

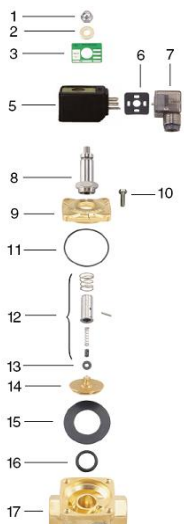
CONSTRUCTION

Body: Brass
 Tube and Spring: 304 Stainless Armature: 430F Stainless Other internal parts: Stainless No Shading Ring
 Seals and gaskets: NBR (Optional EPDM, NBR, SILICONE, VST, CR, ECO, HNBR and Hypalon)
 Moulded coil: Duroplast / Thermo set resin

REPAIR KIT

Diaphragm seal	SP215 + Valve Part Number
Coil	WPG2 + voltage

OVERALL DIMENSIONS



No.	Part No	Description
1	SP201*	Nut
2	SP202*	Washer
3	SP203*	Nameplate
5	SP205*	Coil
6	SP206*	Gasket
7	SP207*	Connector
8	SP208*	Core Tube
9	SP209*	Valve Bonnet
10	SP210*	Bolt
11	SP211*	Bonnet O Ring
12	SP212*	Armature Parts
13	SP213*	Diaphragm Base
14	SP214*	Diaphragm Base
15	SP215*	Diaphragm
16	SP216*	Base O Ring
17	SP217*	Valve Body

* = Valve Part Number

Model	AD14 AD15	AD20	AD25	AD35 AD40	AD50
Port R	1/2	3/4	1	1 1/2	2
A	75	85	100	120	150
B	52	60	70	90	120
C	103	114	120	140	160
Kg	1.03	1.24	1.51	2.77	4.81

