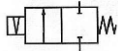


Media: air – water – gas – light oil - vacuum
 Pressure range: 0 to 42 Bar max
 Media temperature: 120°C max
 Ambient temperature: -10°C to +50°C max
 Media viscosity: 50 centistokes max
 Mounting: any position
 Opening / Closing time: 20 mSec Max



LATCHING

2/2 Brass

1/8"

LATCHING

2 WAY DIRECT ACTING

0 – 42 Bar

TYPE LAD6000



PRESSURE

Ø Port BSP	Ø Orifice (mm)	Coil	Flow	Pressure Rating (Bar)		Seals	Part Number
			Kv Ltr/min	Min	Max		
1/8	1.2	WPG1	1.1	0	21	NBR +80°C SILICONE +120°C EPDM +120°C FKM +120°C PTFE +120°C VST +120°C	LAD6012 + seal + voltage
	1.6		1.5	0	14		LAD6016 + seal + voltage
	2.0		1.8	0	7		LAD6020 + seal + voltage
	1.2	WPG2	1.1	0	42		LAD6112 + seal + voltage
	1.6		1.6	0	21		LAD6116 + seal + voltage
	2.0		1.8	0	10		LAD6120 + seal + voltage
	3.0		4.3	0	7		LAD6130 + seal + voltage
	4.0		9.7	0	4.2		LAD6140 + seal + voltage
	5.0		10.7	0	3.5		LAD6150 + seal + voltage

OPTIONS

IP67 UL + CSA Approved Coil & IP65 LED Connector PG11 – DIN 43650 A

* PTFE, VST, CR, ECO, HNBR or Hypalon Seals

Manual Over Ride

Other custom made options available upon request

ELECTRICAL DATA

Voltage (-10% + 10%) Continuous duty 100%		Coil	Power Consumption	Insulation class	Enclosure	Electrical connections
=	12 – 24 (DC)	WPG1	12 Watts	H 180°C	IP 65 with connector	3 spades DIN 43650A DIN 40050 VDE 0110
=	12 – 24 (DC)	WPG2	18 Watts			

CONSTRUCTION

Body: Brass

Tube and Spring: 304 Stainless Armature: 430F Stainless Other internal parts: Stainless No Shading Ring

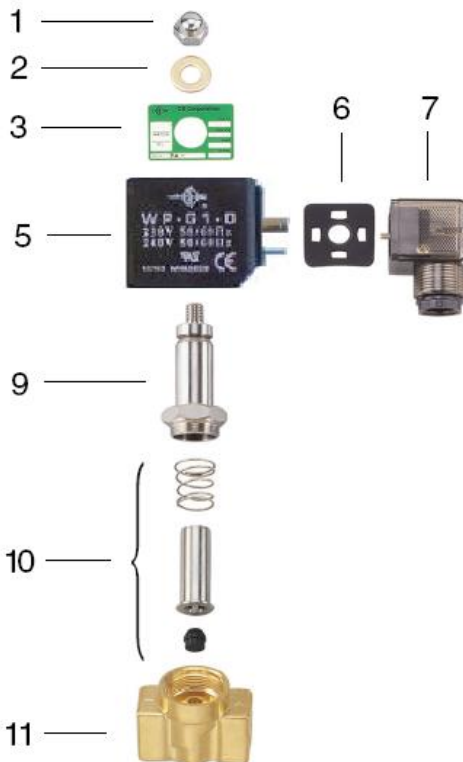
Seals and gaskets: FKM (Optional EPDM, NBR, SILICONE, PTFE, VST, CR, ECO, HNBR and Hypalon)

Moulded coil: Resin

REPAIR KIT

Coil	Coil size (WPG1 or WPG2) + voltage
Armature	SP210 + valve part number

OVERALL DIMENSIONS



Model	A	B	C	F*	G	H	Kg
6012-6020	41	19	85	63	15	10.5	0.47
6112-6150	41	19	88	65	15	10.5	0.66

Item	Part No	Description
1	SP201-*	Nut
2	SP202-*	Washer
3	SP203-*	Nameplate
5	WPG-*	Coil
6	SP206-*	Gasket
7	SP207-*	Connector
9	SP209-*	Core Tube
10	SP210-*	Armature Assembly
17	SP211-*	Valve Body

* = Valve Part Number

