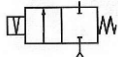


Media: air – water – gas – light oil - vacuum
 Pressure range: 0 to 3.5 Bar max
 Media temperature: 120°C max
 Ambient temperature: -10°C to +50°C max
 Media viscosity: 50 centistokes max
 Mounting: any position
 Opening / Closing time: 20 mSec Max



LATCHING

2/2 Brass

1/8 – 1/2
LATCHING
2 WAY DIRECT ACTING
 0 – 3.5 Bar
TYPE LAD612



PRESSURE

Ø Port BSP	Ø Orifice (mm)	Coil	Flow	Pressure Rating (Bar)		Seals	Part Number
			Kv Ltr/min	Min	Max		
1/8	3.0	WPG1	4	0	3.5	NBR +80°C SILICONE +120°C EPDM +120°C FKM +120°C *PTFE +120°C *VST +120°C	LAD6A + seal + voltage
	4.0		5.5	0	2.5		LAD6B + seal + voltage
	5.0		7.2	0	1.8		LAD6C + seal + voltage
1/4	3.0		4	0	3.5		LAD8A + seal + voltage
	4.0		5.5	0	2.5		LAD8B + seal + voltage
	5.0		7.2	0	1.8		LAD8C + seal + voltage
3/8	4.0	WPG2	5.5	0	3.5		LAD10A + seal + voltage
	6.0		10.5	0	1.8		LAD10B + seal + voltage
	8.0		16.2	0	0.7		LAD10C + seal + voltage
1/2	6.0		10.5	0	1.8		LAD12A + seal + voltage
	8.0		16.2	0	0.7		LAD12B + seal + voltage

OPTIONS

IP67 CSA + UL Approved Coil & IP65 LED Connector PG11 – DIN 43650 A
 * PTFE, VST, CR, ECO, HNBR and Hypalon
 Manual Over Ride AD8 – AD10

ELECTRICAL DATA

Voltage (-10% + 10%) Continuous duty 100%	Coil	Power Consumption	Insulation class	Enclosure	Electrical connections
= 12 - 24 (DC)	WPG1	12 Watts	H 180°C	IP 65 with connector	3 spades DIN 43650A DIN 40050 VDE 0110
= 12 - 24 (DC)	WPG2	18 Watts			

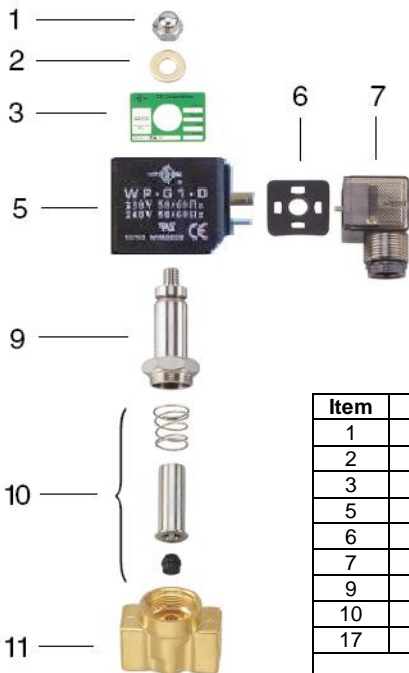
CONSTRUCTION

Body: Brass
 Tube and Spring: 304 Stainless Armature: 430F Stainless Other internal parts: Stainless No Shading Ring
 Seals and gaskets: FKM (Optional EPDM, NBR, SILICONE, PTFE, VST, CR, ECO, HNBR and Hypalon)
 Moulded coil: Resin

REPAIR KIT

Coil	WPG1 OR WPG2 + voltage
Armature + Seal	SP210 + valve part number

OVERALL DIMENSIONS



Item	Part No	Description
1	SP201-*	Nut
2	SP202-*	Washer
3	SP203-*	Nameplate
5	WPG*	Coil
6	SP206-*	Gasket
7	SP207-*	Connector
9	SP209-*	Core Tube
10	SP210-*	Armature Assembly
17	SP211-*	Valve Body

* = Valve Part Number

Model	A	B	C	F*	G	H	Kg
LAD8	41	19	89	63	15	10.5	0.47
LAD10	50	25	90	65	15	11.7	0.73
LAD12	55	27	91	65	17	13	0.78

