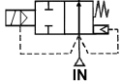


Media: air – water – vacuum (Torr 10⁻¹)
 Pressure range: 0 to 5 Bar max
 Media temperature: +60°C max
 Ambient temperature: +4°C to +50°C max
 Media viscosity: 50 centistokes max
 Mounting: coil upright
 Open 0.2 – 0.5 Sec, Close 1-4 Sec



NO

2/2 Nylon

1/2 – 1”

NORMALLY OPEN 2 WAY ZERO RATED

0 – 5 Bar

TYPE NOPK



PRESSURE

Ø Port BSP	Ø Orifice (mm)	Flow Kv Ltr/min	Min	Max Pressure Rating (Bar)		Seals	Part Number
				DC Coil 22005	AC Coil 22003		
1/2	18	67	0		5	NBR FKM EPDM	NOPK15NS + voltage NOPK15VS + voltage NOPK15ES + voltage
				5		NBR FKM EPDM	NOPK15N-5 + voltage NOPK15V-5 + voltage NOPK15E-5 + voltage
3/4	28	163	0		5	NBR FKM EPDM	NOPK20NS + voltage NOPK20VS + voltage NOPK20ES + voltage
				4		NBR FKM EPDM	NOPK20N-5 + voltage NOPK20V-5 + voltage NOPK20E-5 + voltage
1	28	183	0		5	NBR FKM EPDM	NOPK25NS + voltage NOPK25VS + voltage NOPK25ES + voltage
				4		NBR FKM EPDM	NOPK25N-5 + voltage NOPK25V-5 + voltage NOPK25E-5 + voltage

OPTIONS

IP65 Coil & Connector PG9 – DIN 43650 A
 Silver Shading Ring for AC Coil (Not suitable for DC or ATEX EExmIIT4 coils)
 ATEX EExmIIT4 II 2G & 2D IP65 T130°C (AC ~3 Bar DC= 1 Bar) (Without Shading Ring)
 NPT Thread

ELECTRICAL DATA

Voltage (-10% + 10%) Continuous duty 100%	Coil	Power Consumption		Insulation class	Enclosure	Electrical connections
		Inrush	Holding			
~ 24 - 48 - 110 - 230 - 380 (50 or 60 Hz)	22003	23VA	17VA	H 180°C	IP 65 with connector	3 spades DIN 43650 DIN 40050 VDE 0110
~ 12 - 24 - 48 (DC)	22005	18.5 Watts				

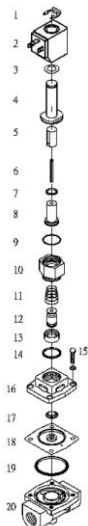
CONSTRUCTION

Body: Poly Acetate
 Tube and internal parts: Stainless steel
 Seals and gaskets: EPDM (Optional FKM or NBR)
 Moulded coil: Resin

REPAIR KIT

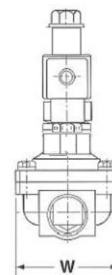
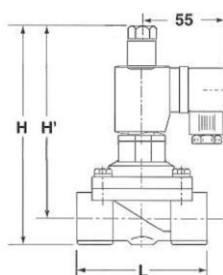
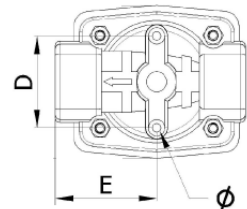
Diaphragm seal	SP + Valve Part Number -DIAPHRAGM
Coil	Coil size (22003 or 22005) + voltage

OVERALL DIMENSIONS



No	Description
1	Coil Clip
2	Coil
3	Wave Washer
4	Core Tube
5	Armature
6	Push Bar
7	Base O Ring
8	Armature Base
9	Socket O Ring
10	Socket
11	Pillar Spring
12	Pillar
13	Spring Seat
14	Socket O Ring
15	Bonnet Bolt
16	Bonnet
17	Diaphragm Spring
18	Diaphragm
19	Body O Ring
20	Valve Body

Model	NOPK15	NOPK20	NOPK25
Port	1/2	3/4	1
L	71	90	
H	114	124	
H1	98	104	
W	56	76	
D	36		
ø	3.5		
Kg	0.5	0.7	0.6



Optional Fixed Plate

