

Media: air  
 Pressure range: 1 to 7 Bar max  
 Media temperature: +50°C max  
 Ambient temperature: -10°C to +50°C max  
 Mounting: any position  
 Cycle rate: 5 Hz max  
 Weight : 72g,93g  
 Low power consumption 0.8 Watts

# 5/2 Miniature Solenoid Valve

1/8" 16.6mm Width

## 5/2 SPRING RETURN & DOUBLE ACTING PILOT ASSIST

1 – 7 Bar

### TYPE VM5252 & 5252M

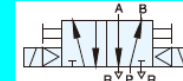
#### 5/2 Way Spring Return VM5252 Series



Ø Port BSP	Ø Orifice (mm <sup>2</sup> )	Pressure Rating (Bar) ΔP		Max Work	Part Number
		Min	Max		
1/8	8.8	1.5	7	8	VM5252-01S + voltage



#### 5/2 Way Double Acting VM5252D Series



Ø Port BSP	Ø Orifice (mm <sup>2</sup> )	Pressure Rating (Bar) ΔP		Max Work	Part Number
		Min	Max		
1/8	8.8	1	7	8	VM5252-01D + voltage



#### Manifold Only VM5252M Series

Ø Port BSP	Part Number
1/4	VM5252M-02 + number of stations



#### OPTIONS

IP65 dust proof coil & JPC LED connector with flying lead wires, surge protection & non polarity & short circuit protection  
 NPT Thread

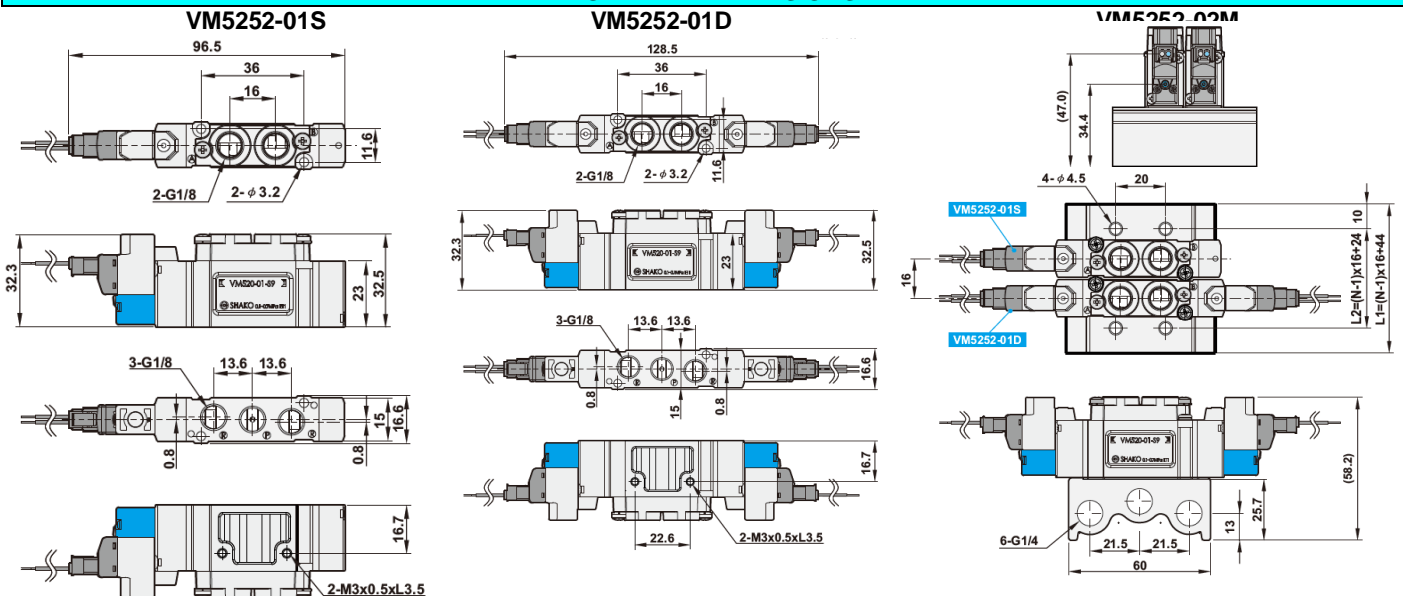
#### ELECTRICAL DATA

Voltage (-10% + 10%) Continuous duty 100%	Power Consumption	Insulation class	Enclosure	Electrical connections
= 12vDC or 24vDC	0.8 Watts	F 155°C	Dust Proof	JPC plug connector

#### CONSTRUCTION

Body: Aluminium alloy, Internal parts: Stainless steel, seals and gaskets: special rubber seals.

#### OVERALL DIMENSIONS



Station	2	3	4	5	6	7	8	9	10
L1	60	76	92	108	124	140	156	172	188
L2	40	56	72	88	104	120	136	152	168