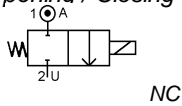


Media: air – water – gas – light oil - vacuum
 Pressure range: 0 to 150 Bar max
 Media temperature: 120°C max
 Ambient temperature: -10°C to +50°C max
 Media viscosity: 50 centistokes max
 Mounting: any position
 Opening / Closing time: 20 mSec Max



2/2 Brass

1/8

NORMALLY CLOSED

2 WAY DIRECT ACTING

0 – 150 Bar

TYPE AD6000



PRESSURE

Ø Port BSP	Ø Orifice (mm)	Coil	Flow			Pressure Rating (Bar) ΔP			Seals	Part Number
			Kv Ltr/min	Min	Max AC	Max DC	Min	Max AC		
1/8	1.2	WPG1	1.1	0	60	42	NBR +80°C SILICONE +120°C EPDM +120°C FKM +120°C *VST +180°C (30 Bar Max) *PTFE +180°C (150 Bar)	AD6012 + seal + voltage		
	1.6		1.5	0	40	28		AD6016 + seal + voltage		
	2.0		1.8	0	20	14		AD6020 + seal + voltage		
	1.2	WPG2	1.1	0	120	84		AD6112 + seal + voltage		
	1.6		1.6	0	60	42		AD6116 + seal + voltage		
	2.0		1.8	0	30	21		AD6120 + seal + voltage		
	3.0		4.3	0	20	14		AD6130 + seal + voltage		
	4.0		9.7	0	12	8.4		AD6140 + seal + voltage		
	5.0		10.7	0	10	7		AD6150 + seal + voltage		
	1.2	WPA3C	1.1	0	150	105		AD6212 + seal + voltage		
	1.6		1.5	0	80	56		AD6216 + seal + voltage		
	2.0		1.8	0	60	42		AD6220 + seal + voltage		
	3.0		4.3	0	40	28		AD6230 + seal + voltage		
	4.0		9.7	0	20	14		AD6240 + seal + voltage		
	5.0		10.7	0	15	10.5		AD6250 + seal + voltage		

OPTIONS

IP67 (EN60529:1991+A1:2000) UL + CSA Approved Coil & IP65 LED Connector PG11 – DIN 43650 A (Except WPA3C coil IP54)
 ATEX EExmII T4 II 2G & 2D IP65 T130°C coil (Pressure rating WPG1 same, WPG2 70% of DC rating, WPA3C not available)
 * PTFE, VST, CR, ECO, HNBR or Hypalon Seals
 Silver shading ring (ADxxS)
 Manual Over Ride
 NPT Thread
 Other custom made options available upon request

ELECTRICAL DATA

Voltage (-10% + 15%) Continuous duty 100%		Coil	Power Consumption		Insulation class	Enclosure	Electrical connections
~	=		Inrush	Holding			
~	24 - 110 - 230 (50 or 60 Hz)	WPG1	11.2VA	8.2VA	H 180°C	IP 65 with connector	3 spades DIN 43650A DIN 40050 VDE 0110
=	12 - 24 (DC)		12 Watts				
~	24 - 110 - 230 (50 or 60 Hz)	WPG2	18.7VA	15.3VA			
=	12 - 24 (DC)		18 Watts				
~	24 - 110 - 230 (50 or 60 Hz)	WPA3C	88VA	57VA		IP54	30 cm flying lead wires
=	12 - 24 (DC)		33.6 Watts				

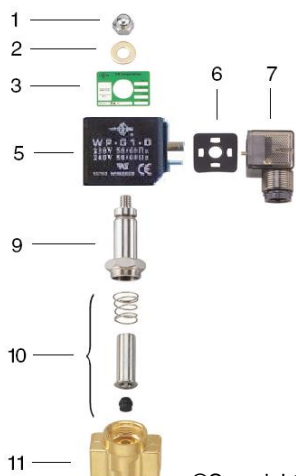
CONSTRUCTION

Body: Brass
 Tube and Spring: 304 Stainless/ Brass Armature: 430F Stainless Other internal parts: Brass
 Shading ring: copper (optional Silver)
 Seals and gaskets: FKM (Optional EPDM, NBR, SILICONE, PTFE, VST, CR, FFKM, HNBR and Hypalon)
 Moulded coil: Resin

REPAIR KIT

Coil	Coil size (WPG1 or WPG2 or WPA3C) + voltage
Armature + seal	SP210 + Valve Part Number

OVERALL DIMENSIONS



Item	Part No	Description
1	SP201-*	Nut
2	SP202-*	Washer
3	SP203-*	Nameplate
5	SP205-*	Coil
6	SP206-*	Gasket
7	SP207-*	Connector
9	SP209-*	Core Tube
10	SP210-*	Armature Assembly
17	SP211-*	Valve Body

* = Valve Part Number

Model	A	B	C	F*	G	H	Kg
6012-6020	41	19	85	63	15	10.5	0.47
6112-6150	41	19	88	65	15	10.5	0.66
6212-6250	41	19	94	47	15	10.5	0.66

