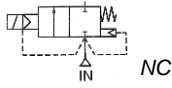


Media: Air, Water, Gas or Liquid  
 Pressure range: 0.3 to 16 bar max\*  
 Media temperature: -5°C to +100°C  
 Ambient temperature: 0°C to +60°C  
 Media viscosity: 50 centistokes max  
 Cycle life: 500,000 cycles  
 Opening / Closing Time: 3 – 5 Sec



# 2/2 Ductile Iron

## DN50 – DN500

### 2 WAY NORMALLY CLOSED

### SERVO ASSISTED

### 0.3 – 16\* Bar

## TYPE BFE-DE



#### PRESSURE

Ø Port PN16	Ø Orifice (mm)	Flow Cv	Pressure Rating (Bar) ΔP		Seals	Part Number
			Min	Max*		
DN50	50	37	0.3	10*	NBR (80°C) FKM (100°C)	BFE50D + seal + voltage
DN65	65	85	0.3	10*		BFE65D + seal + voltage
DN80	80	110	0.3	10*		BFE80D + seal + voltage
DN100	100	150	0.3	10*		BFE100D + seal + voltage
DN125	125	230	0.3	10*		BFE125D + seal + voltage
DN150	150	450	0.3	10*		BFE150D + seal + voltage
DN200	200	580	0.3	10*		BFE200D + seal + voltage
DN250	250	910	0.3	10*		BFE250D + seal + voltage
DN300	300	1300	0.3	10*		BFE300D + seal + voltage
DN350	350	1800	0.3	10		BFE350D + seal + voltage
DN400	400	2300	0.3	10		BFE400D + seal + voltage
DN450	450		0.3	10		BFE450D + seal + voltage
DN500	500		0.3	10		BFE500D + seal + voltage

#### OPTIONS

IP65 Coil & Connector PG11 – DIN 43650 A

Manual Over ride lever valve

\*16 Bar rated solenoid controller and pipework with M17 high power coil

ATEX 22003EX Coil: ATEX EExmIIT4 II 2G & 2D IP65 T130°C

Flange options JIS10K, JIS20K, ANSI150Lb

Other custom flanges, larger sizes, seals, media and pressures available upon request

#### ELECTRICAL DATA

Voltage (-10% +10%) Continuous Duty 100%	Coil	Power Consumption		Insulation Class	Enclosure	Electrical Connections
		Inrush	Holding			
~ 24 – 110 – 230 (50 or 60 Hz)	M16	70 VA	35 VA	F 155°C	IP65 with connector	3 spades DIN 43650A DIN 40050 VDE 0110
= 12 – 24 – 48 – 125		26 Watts				
~ 110 – 230 (50 or 60 Hz)	*M17	35VA	26VA	N 200°C		
= 24		19 Watts				

#### CONSTRUCTION

Body: Ductile Iron with Epoxy Coating (Pressure tested to 16 bar)

Piston, Seat & Shaft: Bronze

Bolts: Brass

Spring: Stainless steel

Ports: Flanged PN16 RF

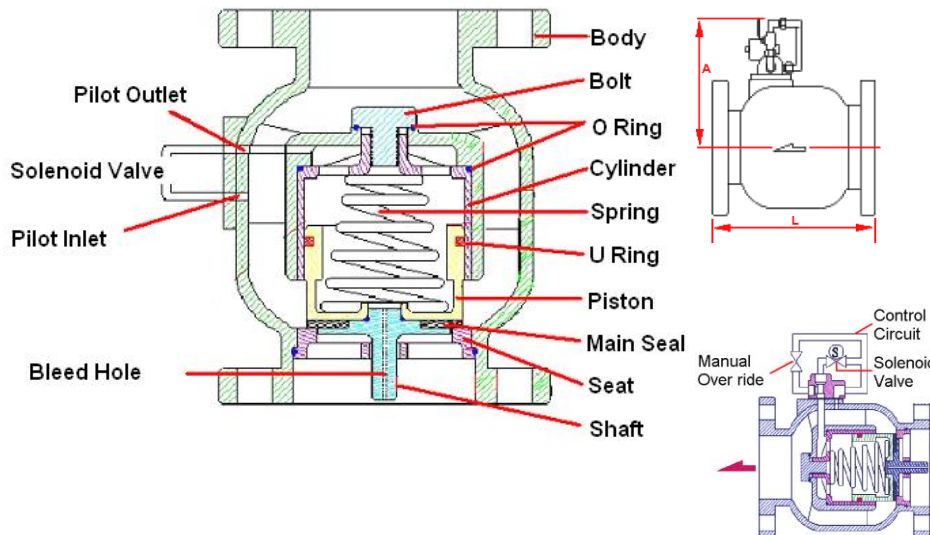
Seals and gaskets: NBR (+80°C max), Viton (+100°C max)

Control pipe work circuit & fittings: Copper & Brass

#### REPAIR KIT

Piston U Ring seal	SP + Valve Part Number – PISTON U RING
External Control Pipework + Solenoid	BFE - NC + seal – PIPEWORK + voltage

#### OVERALL DIMENSIONS



Port	L	A	Kg
DN50	190	187	12
DN65	210	192	15
DN80	225	210	18
DN100	250	222	24
DN125	280	235	32
DN150	310	260	44
DN200	420	300	87
DN250	470	335	152
DN300	530	370	202
DN350	600	415	285
DN400	600		
DN450	750		
DN500	750		