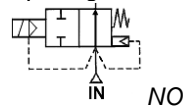


Media: Air, Water or light oil
 Pressure range: 0.3 to 10 Bar max
 Media temperature: -5°C to +100°C
 Ambient temperature: 0° to +60°C
 Media viscosity: 50 centistokes max
 Cycle life: 500,000 cycles
 Opening / Closing Time: 3–5 Sec



2/2 Ductile Iron Epoxy

DN50 – DN300

NORMALLY OPEN

2 WAY SERVO ASSISTED

0.3 – 10 Bar

TYPE NOBFE-DE



PRESSURE

Ø Port PN16	Ø Orifice (mm)	Flow Kv M³/Hr	Pressure ΔP		Seals	Part Number
			Min	Max		
DN50	50	57.7	0.3	10	NBR (80°C) *FKM (100°C)	NOBFE50DE + seal + voltage
DN65	65	80.8	0.3	10		NOBFE65DE + seal + voltage
DN80	80	107.7	0.3	10		NOBFE80DE + seal + voltage
DN100	100	200	0.3	10		NOBFE100DE + seal + voltage
DN125	125	300	0.3	10		NOBFE125DE + seal + voltage
DN150	150	423	0.3	10		NOBFE150DE + seal + voltage
DN200	200	769.2	0.3	10		NOBFE200DE + seal + voltage
DN250	250	1230.8	0.3	10		NOBFE250DE + seal + voltage
DN300	300	1692.3	0.3	10		NOBFE300DE + seal + voltage

OPTIONS

IP65 Coil & Connector PG11 – DIN 43650 A
 ATEX 22003EX Coil: ATEX EExmII T4 II 2G & 2D IP65 T130°C
 Other flange options ANSI150Lb, JIS10K, JIS20K, PN10, PN20
 Other custom options, seals and sizes available upon request

ELECTRICAL DATA

Voltage (-10% +10%) Continuous Duty 100%		Coil	Power Consumption		Insulation Class	Enclosure	Electrical Connections
~	110 – 230 (50 or 60 Hz)		Inrush	Holding			
=	24	M17	35VA	26VA	N 200°C	IP65 With connector	3 spades DIN 43650A DIN40050 VDE0110
			19 Watts				

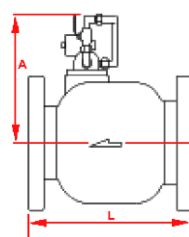
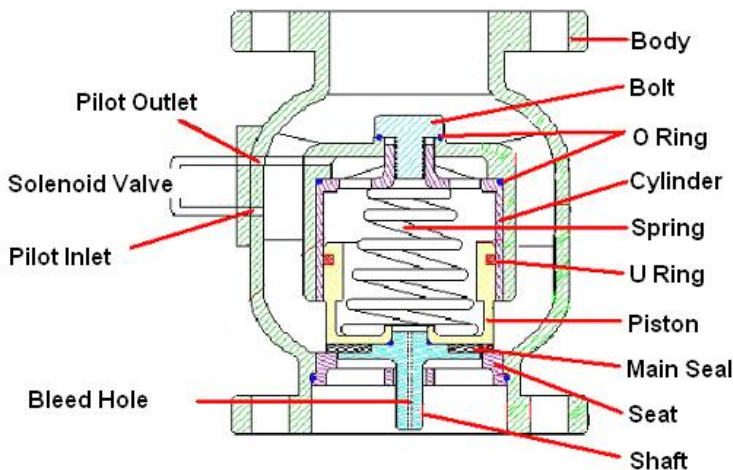
CONSTRUCTION

Body: Ductile Iron with Epoxy Coating (Pressure tested to 16 Bar)
 Piston, Seat & Shaft: Bronze
 Bolts: Brass
 Spring: Stainless steel
 Ports: Flanged PN16 RF
 Seals and gaskets: NBR or Special FKM
 Control pipe work circuit & fittings: Copper & Brass

REPAIR KIT

Piston U Ring	SP + valve part number - U RING
External Control Pipe work + Solenoid	NOBFEB + seal - PIPEWORK + voltage

OVERALL DIMENSIONS



Port	L	A	Kg
DN50	190	187	12
DN65	210	192	15
DN80	225	210	18
DN100	250	222	24
DN125	280	235	32
DN150	310	260	44
DN200	420	300	87
DN250	470	335	152
DN300	530	370	202

